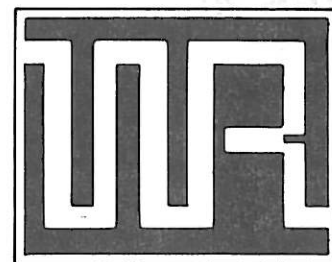




WIL-RICH
FARM EQUIPMENT DIV.

LEAR SIEGLER, INC.



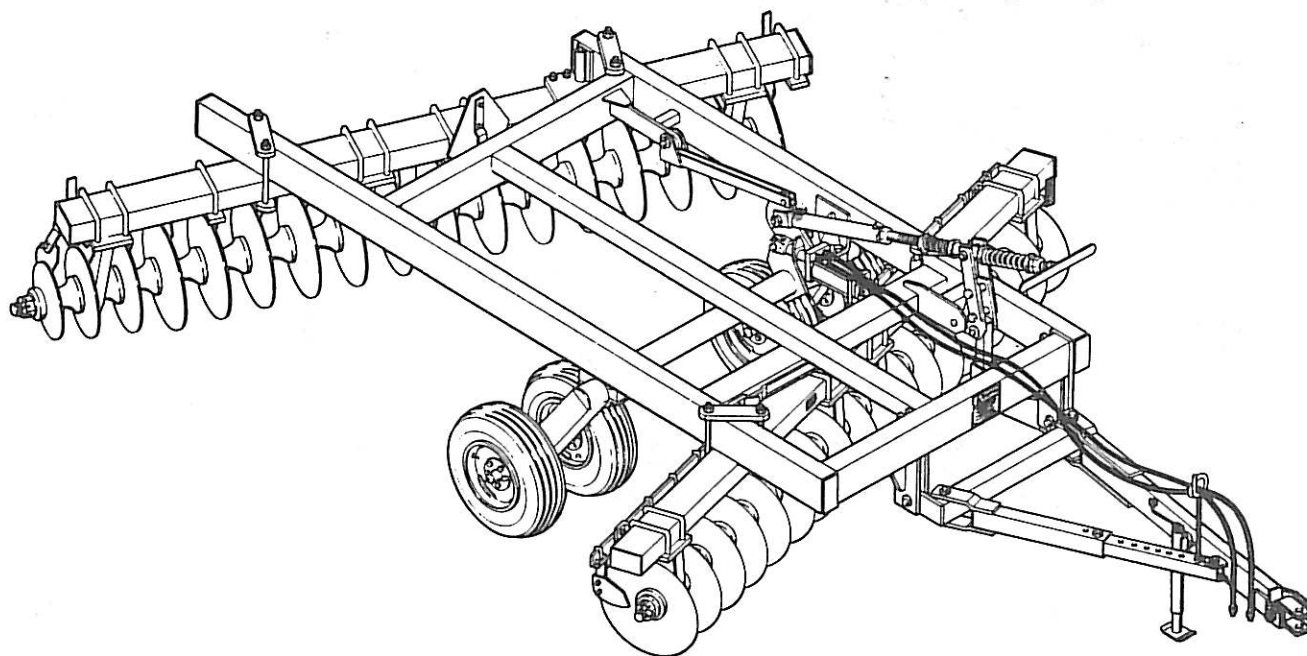
PARTS LISTINGS IN THIS SECTION APPLY TO RPS SERIES
BEGINNING WITH THE FOLLOWING SERIAL NUMBER 1007

AND

RPS 20 SERIAL MODELS BEGINNING WITH THE
FOLLOWING SERIAL NUMBER 1091.

PARTS CATALOG

RPS SERIES &
RPS 20 SERIES
10', 12', 14', & 16'

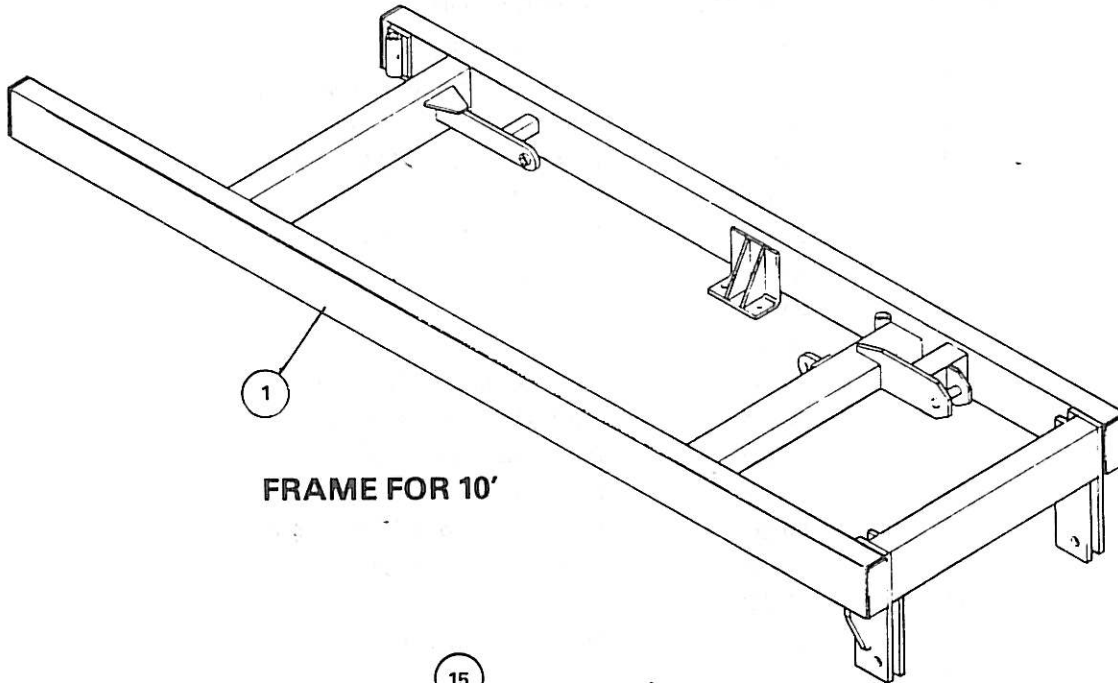


HITCH**RPS
RPS 20**

<u>REF. NO.</u>	<u>PART NO.</u>	<u>DESCRIPTION</u>
1	24467	Hitch, Main Tube
2	24389	Hitch, Frame and Leveling Tube
3	24436	Hitch, Adjustment Tube
4	24416	Hitch, Adjustment Member
5	24484	Hitch Clevis
6	24437	Bar Type Hitch Clevis
7	24328	Hose Carrier
8	24415	Jack
9	24340	Pin, 1 3/4" dia. x 9 3/4" long
10A	24341	Pin, 1 1/4" dia. x 3-5/8" long
10B	24334	Pin 1 1/4" dia. x 4-3/8" long
11	24338	Pin, 1" dia. x 7 1/2" long
12	24335	Pin, 1" dia. x 5 1/4" long
13	24337	Pin, 1" dia. x 4-3/8" long (yellow color)
14	24304	Bolt, 1 1/4" x 8" Hex Hd. Mach.
15	88622	Nut, 1 1/4" Hex jam
16	88104	Nut, 1/2" (non lock)
17	88352	Spring clip #6
18	88303	Washer, lock, 1/2"
19	88602	Washer, flat, 1 1/4"
20	88601	Cotter Pin, 1/4" x 2" long
21	88603	Cotter Pin, 1/4" x 3" long
22	24491	Safety Chain Bracket (Optional)
23	24456	Safety Chain w/hook (Optional)
--	24019	Optional Safety Chain (Consists of bracket #24491 and safety chain #24456.)

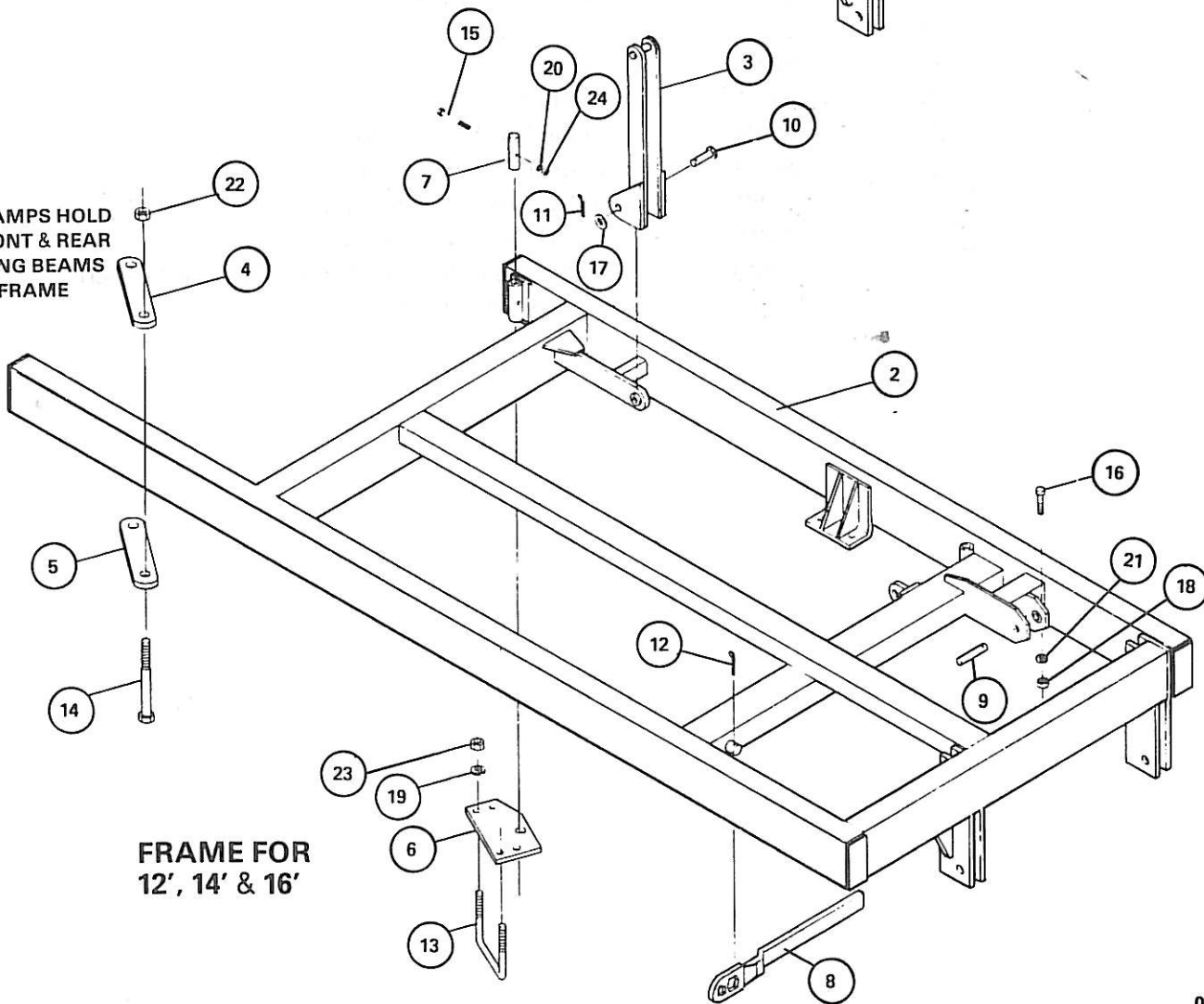
RPS
RPS 20

FRAME



FRAME FOR 10'

CLAMPS HOLD
FRONT & REAR
GANG BEAMS
TO FRAME



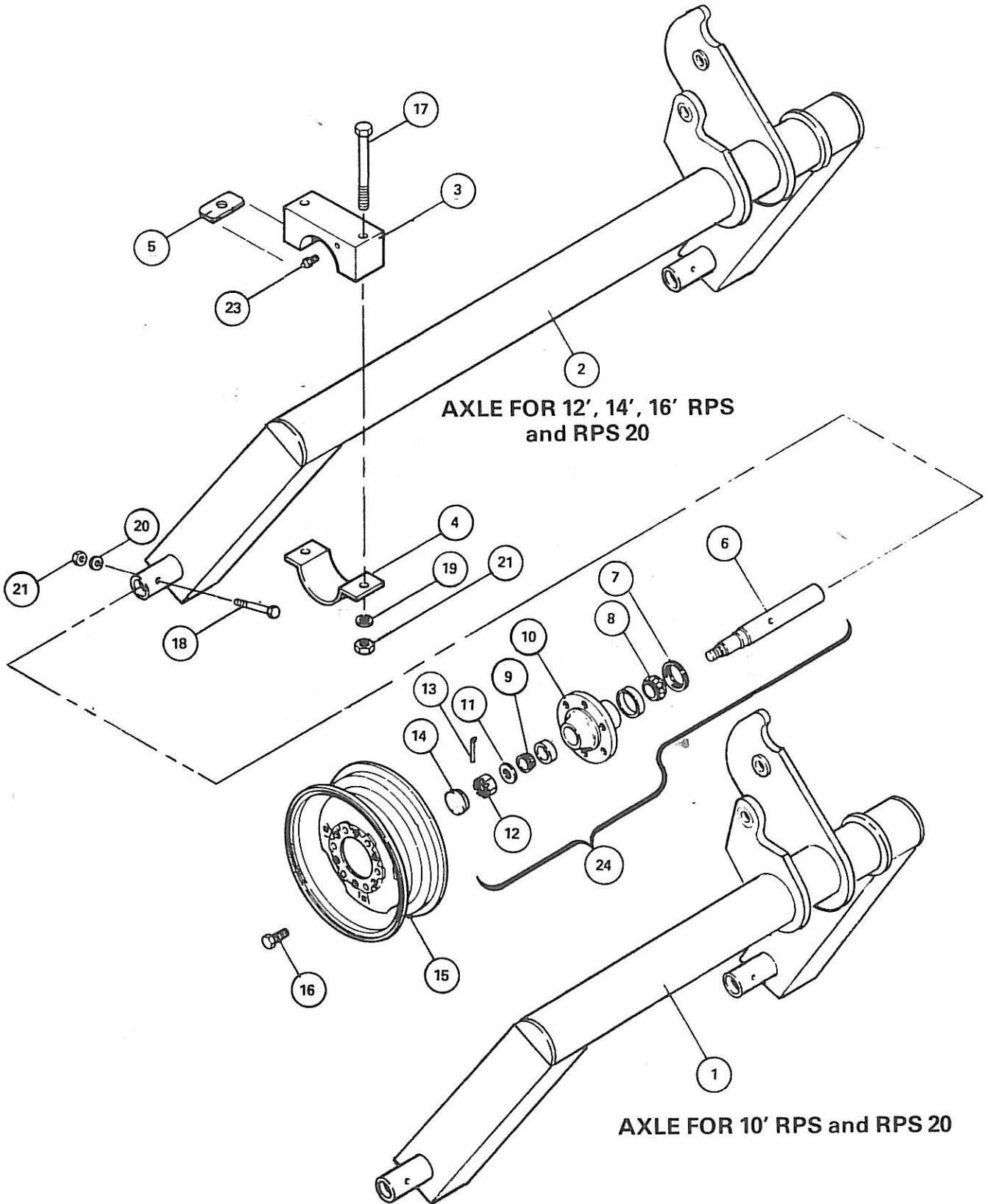
FRAME FOR
12', 14' & 16'

FRAME**RPS
RPS 20**

<u>REF. NO.</u>	<u>PART NO.</u>	<u>DESCRIPTION</u>
1	24281	Frame for 10' RPN and RPS 20
2	24331	Frame for 12', 14' & 16' RPS and RPS 20
3	24158	Transport Lockout
4	24439	Clamp Plate (top)
5	24470	Clamp Plate (bottom)
6	24092	Pivot Base
7	24144	Pivot Pin
8	24305	RPS Gang Wrench for 1-3/4" Round Shaft
8	25762	RPS/20 Series Gang Wrench for 1-1/2" square shaft
9	24297	Pin (headless) 1" dia. x 5 1/2" long
10	24337	Pin, 1" dia. x 4-3/8" long
11	88601	Cotter Pin, 1/4" x 2" long
12	88603	Cotter Pin, 1/4" x 3" long
13	24478	U-bolt, 7/8" dia. x 8"
14	25682	Bolt, 1 1/4" - 7 x 16" long
15	88608	Bolt, 3/8" - 16 x 3" long
16	88488	Bolt, 5/16" - 18 x 2 1/4" long
17	88196	Washer, flat, 1"
18	25687	Nut 5/16" non lock
19	88341	Washer, lock, 7/8"
20	88362	Washer, lock, 3/8"
21	25686	Washer, lock, 5/16"
22	88684	Nut, 1 1/4" (non lock)
23	88371	Nut, 7/8" (non lock)
24	88103	Nut, 3/8" (non lock)

RPS
RPS 20

AXLE

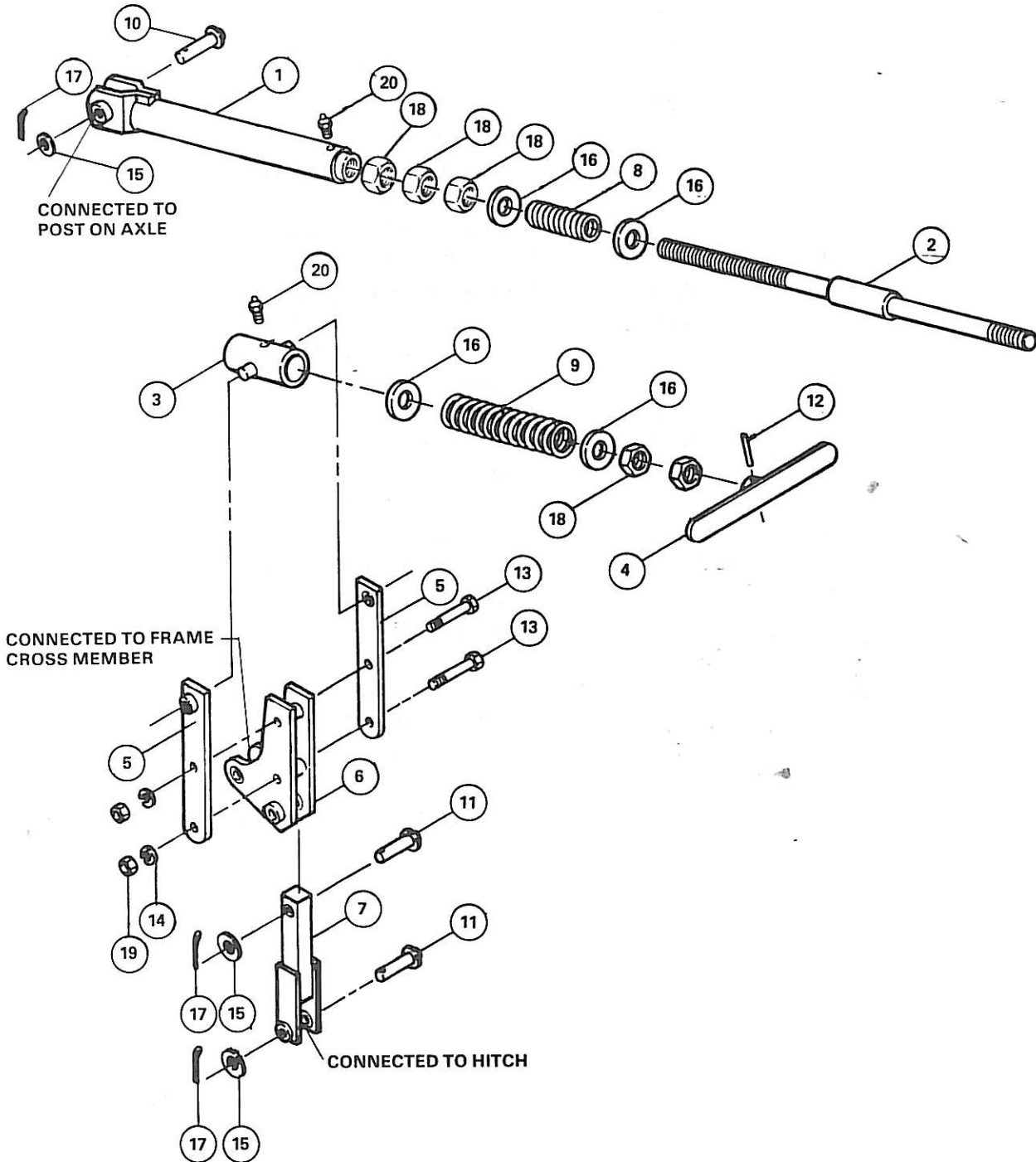


AXLE**RPS
RPS 20**

<u>REF. NO.</u>	<u>PART NO.</u>	<u>DESCRIPTION</u>
1	24327	Axle for 10' RPS and RPS 20
2	24176	Axle for 12', 14' & 16' RPS and RPS 20
3	24076	Axle Bearing Casting w/Zerk
4	24056	Axle Bearing Clamp
5	24079	Bearing Shim, thin
5	24132	Bearing Shim, thick
6	*24105	Spindle, 1 3/4" x 12-1/8" long
7	*24384	Seal, grease
8	*24457	Inside Bearing Cone (LM48548)
9	*10345	Outside Bearing Cone (LM67048)
10	*24298	Hub Casting with Cups and grease zerk
--	24405	Inside bearing cup (LM48510)
--	10344	Outside bearing cup (LM67010)
11	*24221	Washer, 2" O.D. x 7/8" I.D., flat
12	*24222	Castle Nut, 7/8"
13	*88607	Cotter Pin, 5/32" x 1 1/4" long
14	*11381	Dust Cap
15	24299	Wheel Rim, 15" x 8" wide, 6 bolt
16	*24385	Wheel Bolt, 1/2"
17	88600	Bolt, 3/4" - 10 x 6 1/2" (grade 5)
18	88608	Bolt, 3/8" - 16 x 3" long
19	88130	Lock Washer, 3/4"
20	88362	Lock Washer, 3/8"
21	88110	Nut, 3/4" (non lock)
22	88103	Nut, 3/8" (non lock)
23	24709	Grease Zerk, 1/4"
24	24283 41233	1 3/4" Spindle and Hub Assembly (Consist of all parts marked by an asterisk)

RPS RPS 20

LEVELING LINKAGE



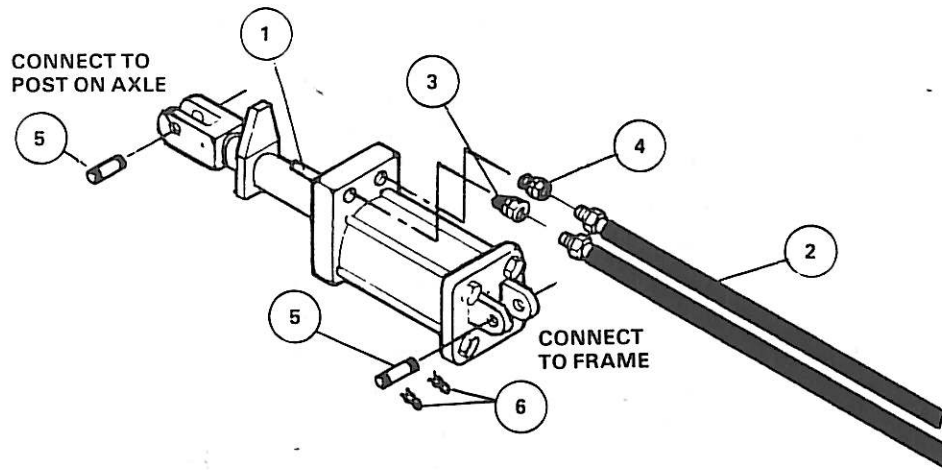
LEVELING LINKAGE

**RPS
RPS 20**

<u>REF. NO.</u>	<u>PART NO.</u>	<u>DESCRIPTION</u>
1	*24067	Leveling Screw Connector
2	*24284	1 ¼" Leveling Screw Shaft
3	*24490	Trunion
4	*24286	Leveling Screw Handle
5	24360	Level Pivot Strap
6	24014	Leveling Pivot Plate
7	24120	Leveling Connector
8	*24423	Leveling Screw Spring #2
9	*24424	Leveling Screw Spring #1
10	*24337	Pin, 1" dia. x 4-3/8" long
11	24335	Pin, 1" dia. x 5 ½" long
12	*88472	Pin, roll, 5/16" dia. x 1 ¾" long
13	25678	Bolt, 1" - 8 x 5 ½" long
14	*25680	Washer, lock, 1"
15	88196	Washer, flat, 1"
16	*25755	Spring Stop, washer 2 ¾" O.D.
17	*88601	Cotter Pin, ¼" x 2" long
18	*88622	Nut, Jam, 1 ¼"
19	25679	Nut, 1" (non lock)
20	*24709	Grease Zerk, ¼"
	24068	Leveling Screw Assembly (consists of all parts marked by asterisk)

RPS HYDRAULIC CYLINDER & COMPONENTS

RPS 20

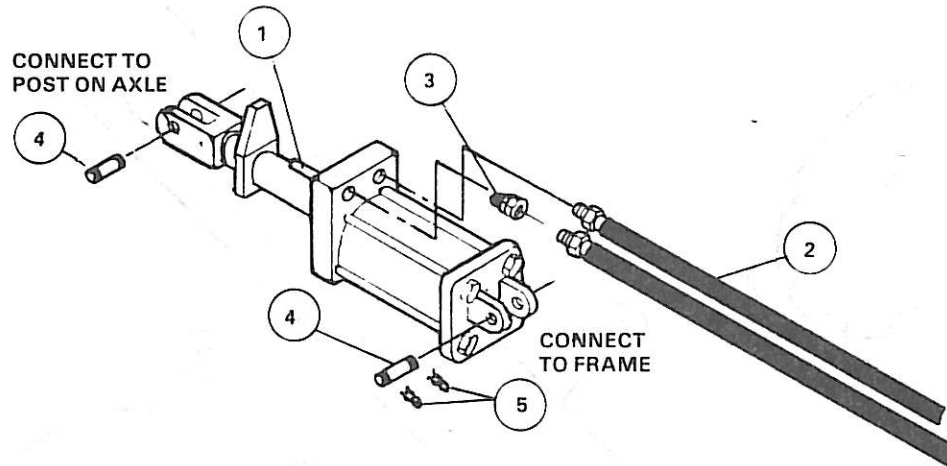


<u>REF. NO.</u>	<u>PART NO.</u>	<u>DESCRIPTION</u>
1	*24027	*Hydraulic Cylinder 4" Bore x 8" Stroke with Internal Depth Control System, 1/2" o-ring ports.
2	24087	Hydraulic Hose 1/2" x 13'0" long
3	24391	Hydraulic Fitting, 3/16" flow restrictor
4	24004	Hydraulic Fitting, Adapter male to female
5	24318	Pin, 1"
6	24315	Spring Clip

*Parts breakdown for the 24027 4" Bore x 8" Stroke Cylinder are on pages 78 & 79.

HYDRAULIC CYLINDER & COMPONENTS

RPS
RPS 20

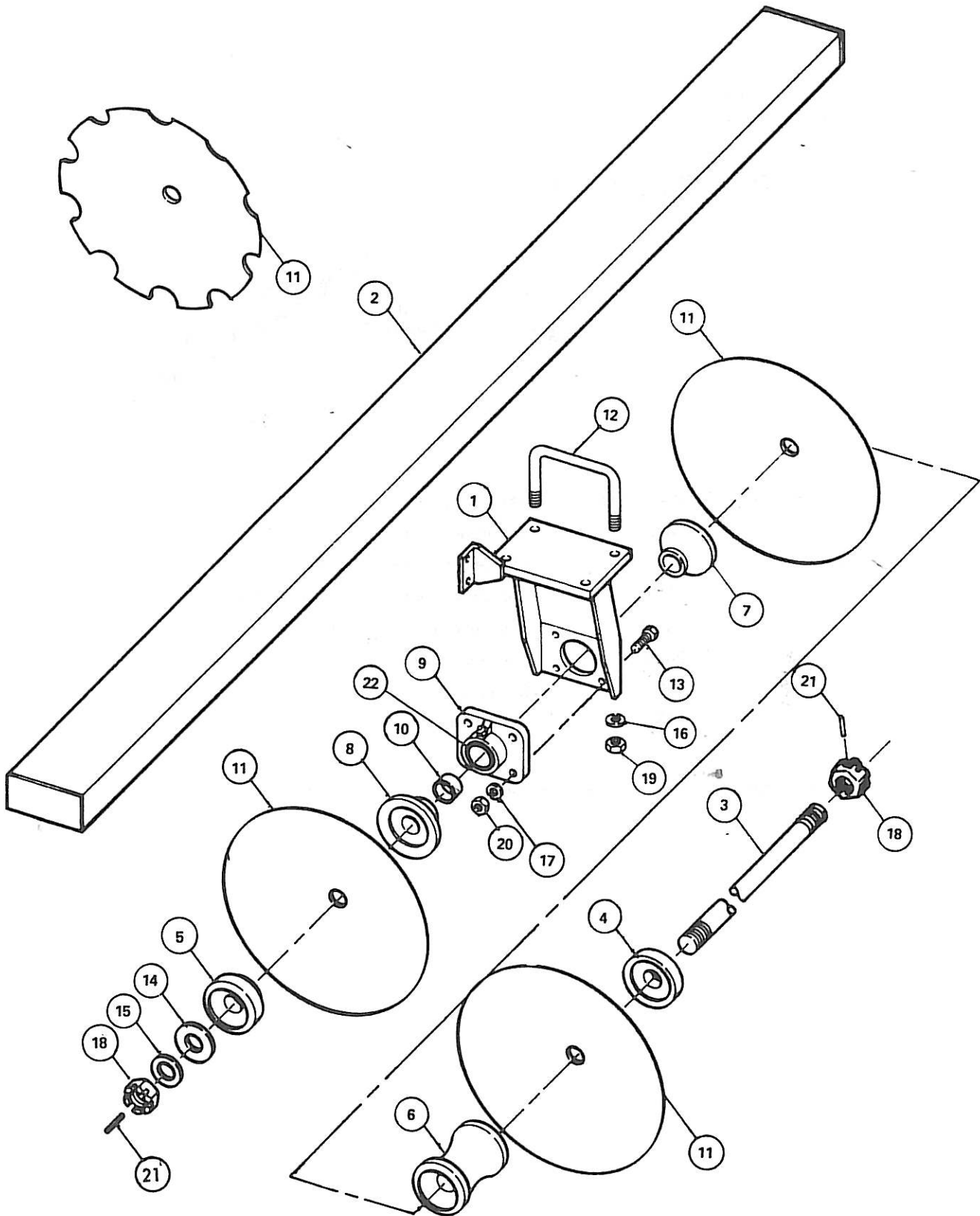


<u>REF. NO.</u>	<u>PART NO.</u>	<u>DESCRIPTION</u>
1	*24027	*Hydraulic Cylinder 4" Bore x 8" Stroke with Internal Depth Control system 3/4"-16 SAE #8 o-ring ports.
2	24062	Hydraulic Hose 3/8" x 13'0" long
3	24065	Hydraulic Fitting, 3/16" flow restrictor
4	24318	Clevis Pin 1"
5	24315	Spring Clip

*Parts breakdown for the 24027 4" Bore x 8" Stroke Cylinder is on pages 78 & 79.

RPS ONLY

FRONT GANGS



FRONT GANGS

ROUND GANG SHAFT COMPONENTS

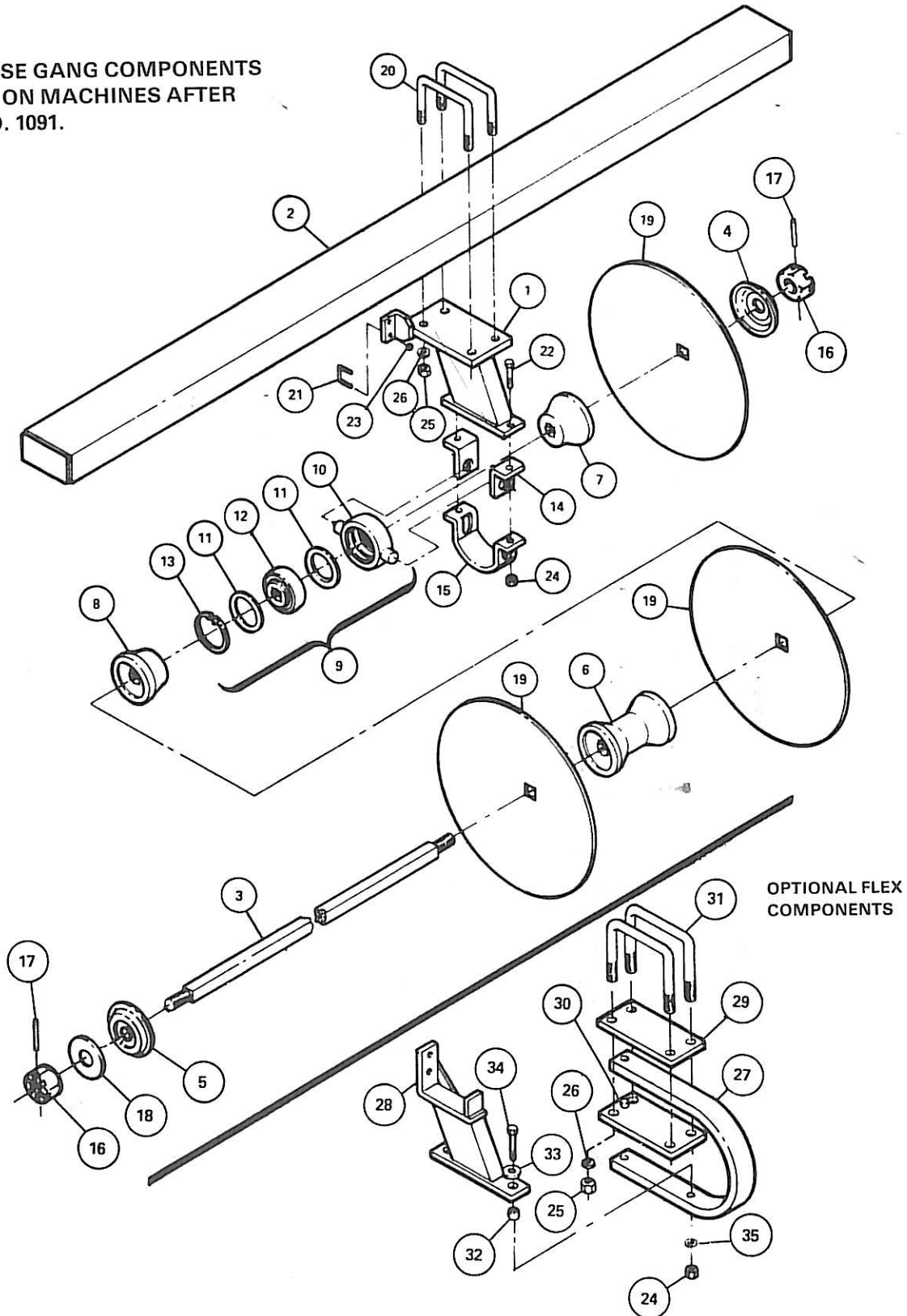
RPS ONLY

<u>REF.NO.</u>	<u>PART NO.</u>	<u>DESCRIPTION</u>
1	24028	Bearing Stand, Front Gang
2	24172	Gang Beam, 10' 0" long for 10' RPS
2	24114	Gang Beam, 12' 0" long for 12' 0" RPS
2	24112	Gang Beam, 13' 6" long for 14' 0" RPS
2	24167	Gang Beam, 15' 0" long for 16' 0" RPS
3	24239	1 3/4" dia. Gang Shaft, 72" long
3	24244	1 3/4" dia. Gang Shaft, 81 1/4" long
3	24246	1 3/4" dia. Gang Shaft, 82 1/2" long
3	24245	1 3/4" dia. Gang Shaft, 90 1/2" long
3	24230	1 3/4" dia. Gang Shaft, 93" long
3	24241	1 3/4" dia. Gang Shaft, 118" long
3	24242	1 3/4" dia. Gang Shaft, 114 1/2" long
4	24051	End Cap
5	24052	End Cap
6	24001	Spool Casting, 9" long
6	24048	Spool Casting, 10 1/2" long
7	24002	Long Bearing Spool Half for 9" spacing
7	24003	Long Bearing Spool Half for 10 1/2" spacing <i>D1005</i>
8	24050	Short Bearing Spool End Casting <i>D1013</i>
9	24023	Heavy Duty Gang Bearing, 2-3/16" <i>3030R1</i>
10	24046	Gang Shaft Bushing
11	24425	26" Blade .250, 3 1/2" Concave
11	24426	26" Blade .250, 3 1/2" Concave with cut-out
11	24443	24" Blade .250, 3" Concave
11	24440	24" Blade .250, 3" Concave with cut-out
11	24421	24" Blade .203, 3" Concave
11	24429	24" Blade .203, 3" Concave with cut-out
12	24478	8" U-bolt, 7/8"
13	88247	Bolt 1/2" - 13 x 2" long
14	24533	Washer, flat, 1 3/4" (3/4" thick x 4" O.D.)
15	25677	Washer, flat, 1 3/4"
16	88341	Washer, lock, 7/8"
17	88303	Washer, lock, 1/2"
18	24220	Nut, slotted 1 3/4"
19	88371	Nut, 7/8" (non lock)
20	88104	Nut 1/2" (non lock)
21	25683	Pin, roll, 5/16" dia. x 2-3/4" long
22	24022	Bearing Insert (can be ordered separately)

RPS 20 Series Only

FRONT GANGS SQUARE GANG SHAFT COMPONENTS

NOTE: THESE GANG COMPONENTS
ARE USED ON MACHINES AFTER
SERIAL NO. 1091.



FRONT GANGS

SQUARE GANG SHAFT COMPONENTS

RPS 20
Series
Only

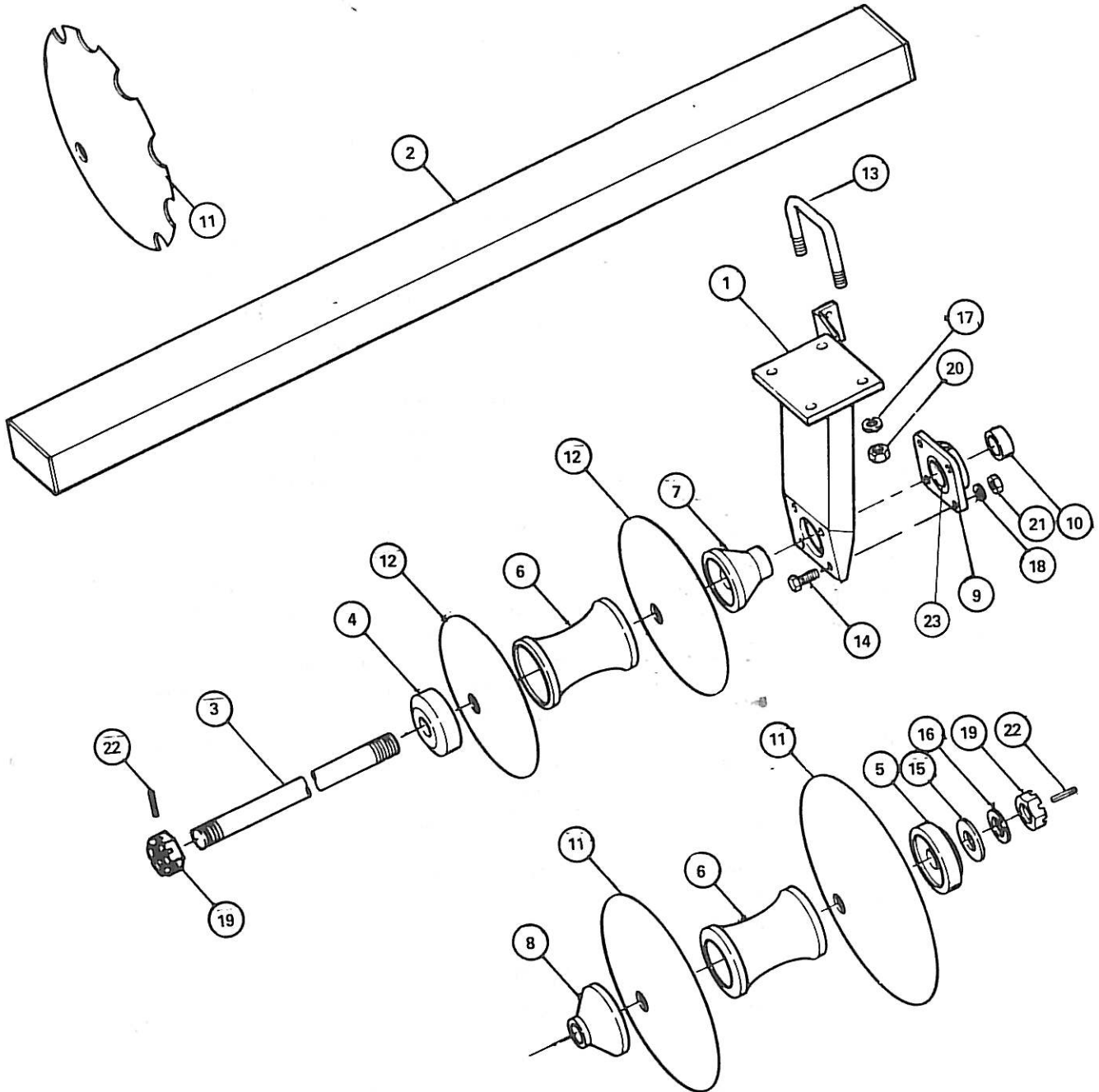
REF. NO.	PART NO.	DESCRIPTION
1	25769	Front Bearing for Toggle Mount Bearing
2	24172	Gang Beam, 10' 0" long
2	24114	Gang Beam, 12' 0" long
2	24112	Gang Beam, 13' 6" long
2	24167	Gang Beam, 15' 0" long
3	24722	1-1/2" Square Gang Shaft 80-3/4" long
3	24721	1-1/2" Square Gang Shaft 71-1/2" long
3	25725	1-1/2" Square Gang Shaft 92-3/4" long
3	25729	1-1/2" Square Gang Shaft 113-3/4" long
3	25730	1-1/2" Square Gang Shaft 117-1/4" long
4	25710	End Cap casting (2-1/4" long)
5	24190	Spring End Gang Washer
6	24447	9" Gang Spool Casting
6	25697	10-1/2" Gang Spool Casting
7	25695	Long Bearing Spool Casting for 9" Spacing
7	25696	Long Bearing Spool Casting for 10-1/2" Spacing
8	25694	Short Bearing Spool Casting
9	24306	Toggle Bearing and Casting Assembly (consists of Ref. No. 10, 11, 12 & 13)
10	24155	Toggle Bearing Casting
11	24008	Toggle Bearing Washer
12	24099	Toggle Bearing Insert w/ Square Hole (1-1/2")
13	24210	Toggle Bearing Retaining Ring
14	24487	Bearing Clamp Clip for 10" spacing
15	24486	Bearing Clamp for 10" spacing
16	88614	1-1/2" Nut, Hex Heavy Slotted
17	88605	Roll Pin 5/16" x 2-1/4" long
18	88610	1-9/16" I.D. x 3" O.D. x 1/4" Gang Washer
19	25700	Disk Blade 26" x 3.0" Conc. x 1/4" Smooth - Front
19	25699	Disk Blade 26" x 3.0" Conc. x 1/4" Notch - Front
19	24038	Disk Blade 24" x 3.0" Conc. 1/4" Smooth - Front
19	24325	Disk Blade 24" x 3.0" Conc. x 1/4" Notch - Front
19	25704	Disk Blade 24" x 3.0" Conc. x 6 Ga. Smooth - Front
19	25705	Disk Blade 24" x 3.0" Conc. x 6 Ga. Notch - Front
20	24478	U-Bolt 7/8" x 8" Spread
21	24329	U-Bolt for Scraper Bar
22	88291	Bolt 3/4" x 3" long (Grade 5)
23	88621	Lock Nut 1/2" (Nylon)
24	88611	Lock Nut 3/4" (Nylon)
25	88371	Nut (non-lock) 7/8"
26	88341	Lock Washer 7/8"

OPTIONAL FLEX COMPONENTS

27	25706	Spring Shank for Rolling Plow
28	25757	Scraper Bar Bracket Weldment
29	25715	Top Clamp Plate
30	25756	Bottom Bearing Shank Saddle
31	25689	U-Bolt 7/8" x 8" spread w/7-1/2" long leg
32	24359	Pivot Bushing (1" O.D. x 3/4" long)
33	88131	Flat Washer 3/4"
34	25692	Bolt 3/4" x 4-1/2" long (Grade 5)
35	88130	Lock Washer 3/4"

RPS ONLY

REAR GANGS
ROUND GANG SHAFT COMPONENTS



REAR GANGS

ROUND GANG SHAFT COMPONENTS

RPS ONLY

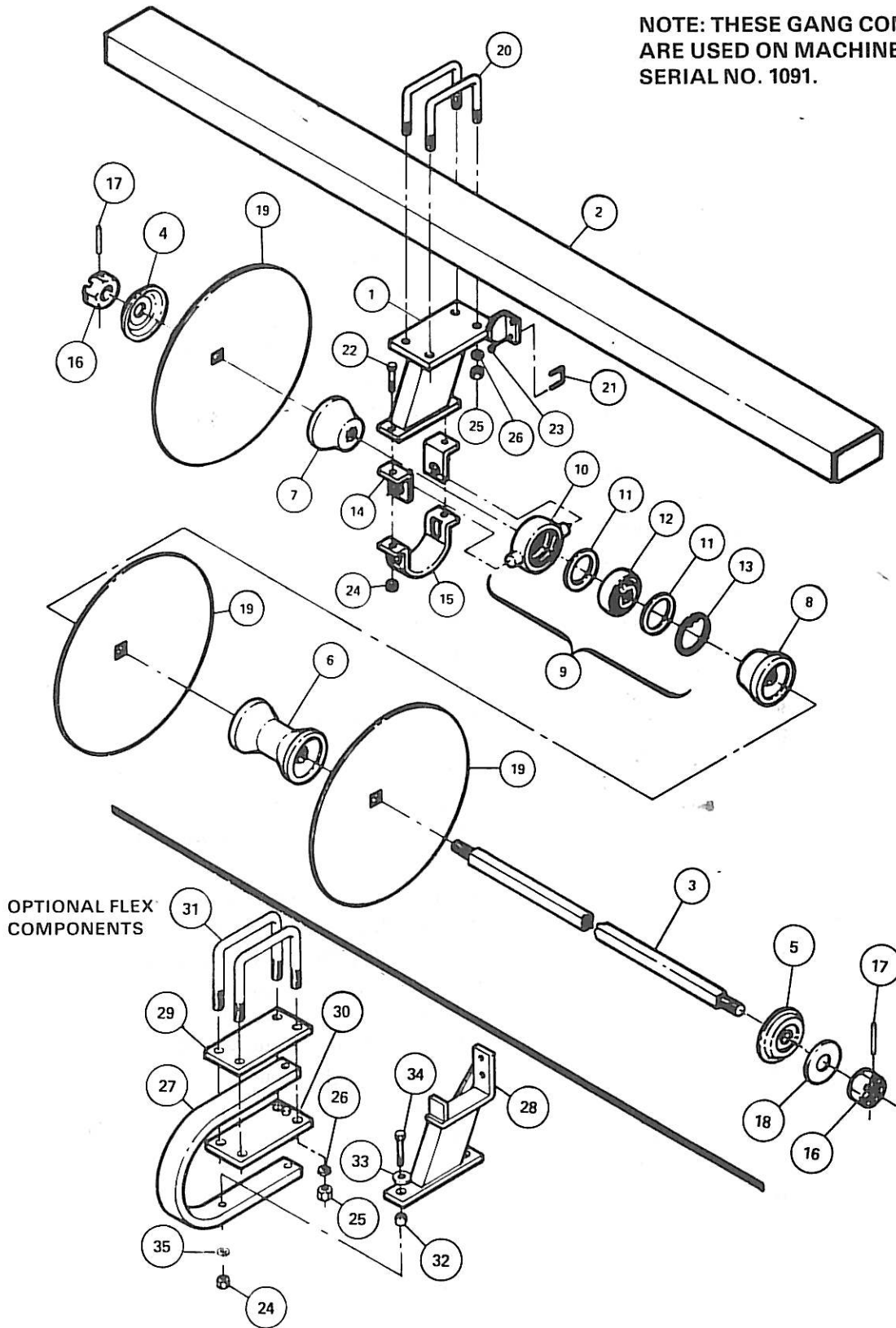
<u>REF. NO.</u>	<u>PART NO.</u>	<u>DESCRIPTION</u>
1	24078	Bearing Stand, Rear Gang
2	24166	Gang Beam, 10' long for 10' RPS
2	24114	Gang Beam, 12' long for 12' RPS
2	24170	Gang Beam, 14' long for 14' RPS
2	24164	Gang Beam, 16' long for 16' RPS
3	24239	1 3/4" dia. Gang Shaft, 72" long
3	24244	1 3/4" dia. Gang Shaft, 81 1/4" long
3	24246	1 3/4" dia. Gang Shaft, 82 1/2" long
3	24245	1 3/4" dia. Gang Shaft, 90 1/2" long
3	24230	1 3/4" dia. Gang Shaft, 93" long
3	24232	1 3/4" dia. Gang Shaft, 99 3/4" long
3	24233	1 3/4" dia. Gang Shaft, 103 1/2" long
3	24229	1 3/4" dia. Gang Shaft, 127" long
3	24234	1 3/4" dia. Gang Shaft, 125" long
3	24231	1 3/4" dia. Gang Shaft, 98" long
4	24051	End Cap
5	24052	End Cap
6	24001	Spool Casting, 9" long
6	24048	Spool Casting, 10 1/2" long
7	24002	Long Bearing Spool Half for 9" spacing
7	24003	Long Bearing Spool Half for 10 1/2" spacing
8	24050	Short Bearing Spool End Casting
9	24023	Heavy Duty Gang Bearing, 1-3/16"
10	24046	Gang Shaft Bushing
11	24431	26" Blade .250, 4" Concave
11	24434	26" Blade .250, 4" Concave with cut-out
11	24444	24" Blade .250, 3 3/4" Concave
11	24445	24" Blade .250, 3 3/4" Concave with cut-out
11	24435	24" Blade .203, 3 3/4" Concave
11	24419	24" Blade .203, 3 3/4" Concave with cut-out
11	24428	22" Blade .180, 3 1/4" Concave
11	24420	22" Blade .180, 3 1/4" Concave with cut-out
12	24497	20" Blade 6 ga., 2" Concave
12	24432	18" Blade .148, 1 3/4" Concave
12	24427	18" Blade .148, 1 3/4" Concave with cut-out
12	24463	16" Blade .148, 1 1/2" Concave
13	24478	8" U-bolt - 7/8"
14	88247	Bolt 1/2" - 13 x 2" long
15	24533	Washer flat, 1 3/4" (3/4" thick x 4" O.D.)
16	25677	Washer, flat, 1 3/4"
17	88341	Washer, lock, 7/8"
18	88303	Washer, lock, 1/2"
19	24220	Nut, slotted, 1 3/4"
20	88371	Nut, 7/8"
21	88104	Nut, 1/2"
22	25683	Pin, roll, 5/16" dia. x 2 3/4" long
23	24022	Bearing Insert (can be ordered separately)

WRP-43-0684

RPS 20
Series
Only

REAR GANGS
SQUARE GANG SHAFT COMPONENTS

NOTE: THESE GANG COMPONENTS
ARE USED ON MACHINES AFTER
SERIAL NO. 1091.



OPTIONAL FLEX
COMPONENTS

REAR GANGS

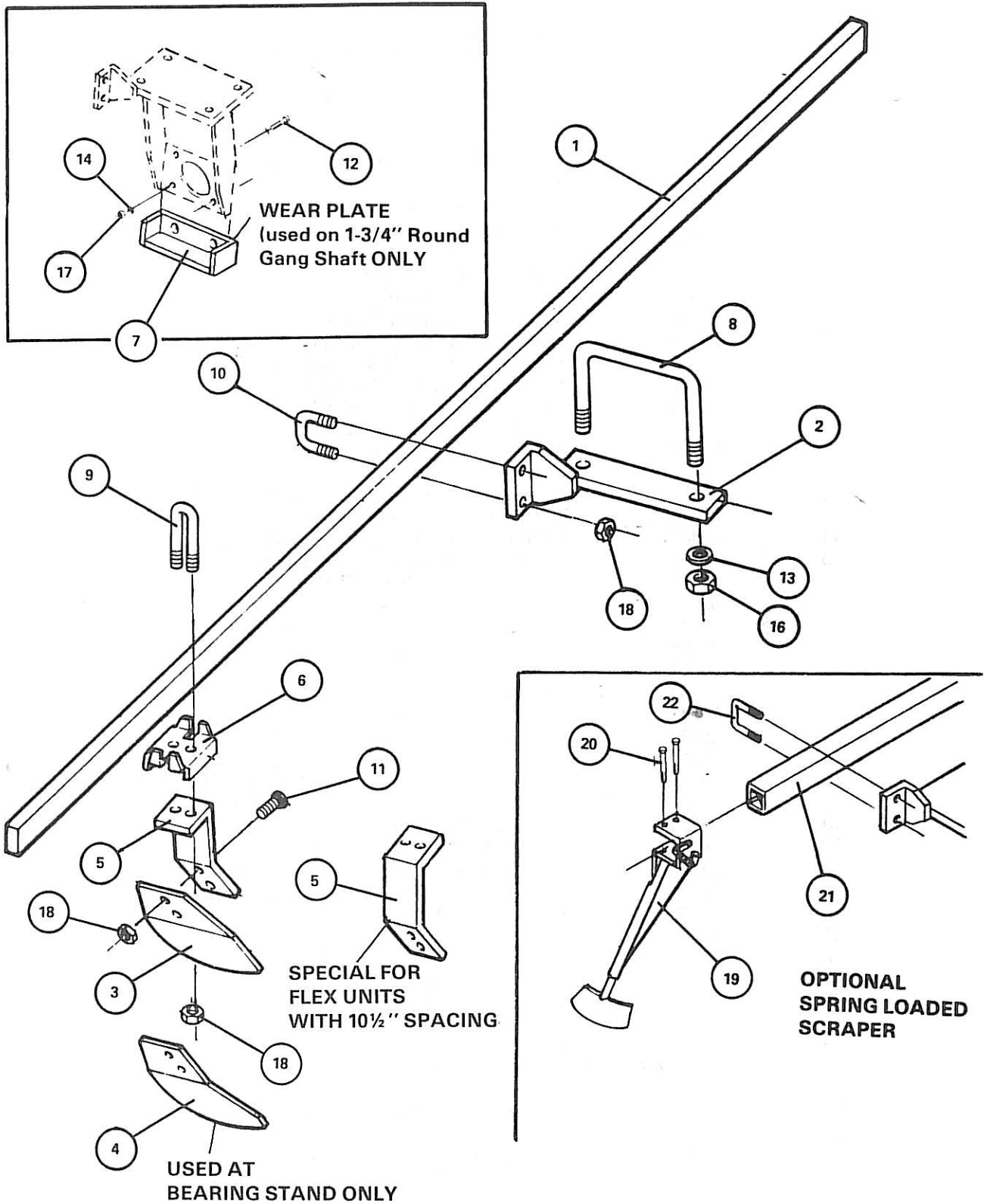
SQUARE GANG SHAFT COMPONENT

**RPS
Only**

REF. NO.	PART NO.	DESCRIPTION
1	25768	Rear Bearing Stand for Toggle Mount Bearing
2	24166	Gang Beam, 10' long
2	24114	Gang Beam, 12' long
2	24170	Gang Beam, 14' long
2	24164	Gang Beam, 16' long
3	25721	1-1/2" Square Gang Shaft 71-1/2" long
3	25722	1-1/2" Square Gang Shaft 80-3/4" long
3	25723	1-1/2" Square Gang Shaft 82-1/4" long
3	25724	1-1/2" Square Gang Shaft 89-3/4" long
3	25725	1-1/2" Square Gang Shaft 92-1/2" long
3	25726	1-1/2" Square Gang Shaft 99" long
3	25727	1-1/2" Square Gang Shaft 103-1/2" long
3	25731	1-1/2" Square Gang Shaft 124-1/4" long
3	25732	1-1/2" Square Gang Shaft 126-1/4" long
4	25710	End Cap casting (2-1/4" long)
5	24190	Spring End Gang Washer
6	24447	9" Gang Spool Casting
6	25697	10-1/2" Gang Spool Casting
7	24351	Long Bearing Spool Casting for 9" Spacing
7	25696	Long Bearing Spool Casting for 10-1/2" Spacing
8	24352	Short Bearing Spool Casting
9	24306	Toggle Bearing and Casting Assembly (consists of Ref. No. 10, 11, 12 & 13)
10	24155	Toggle Bearing Casting
11	24008	Toggle Bearing Washer
12	24099	Toggle Bearing Insert w/ Square Hole (1-1/2")
13	24210	Toggle Bearing Retaining Ring
14	24487	Bearing Clamp Clip for 10" hole spacing
15	24486	Bearing Clamp for 10" hole spacing
16	88614	1-1/2" Nut, Hex Heavy Slotted
17	88605	Roll Pin 5/16" x 2-1/4" long
18	88610	1-9/16" I.D. x 3" O.D. x 1/4" Gang Washer
19	25865	Disk Blade 26" x 3.5" Conc. x 1/4" Smooth - Rear
19	25708	Disk Blade 26" x 3.5" Conc. x 1/4" Notch - Rear
19	25864	Disk Blade 24" x 3.69" Conc. x 1/4" Smooth - Rear
19	25712	Disk Blade 24" x 3.69" Conc. x 1/4" Notch - Rear
19	25709	Disk Blade 24" x 3.69" Conc. x 6 Ga. Smooth - Rear
19	25711	Disk Blade 24" x 3.69" Conc. x 6 Ga. Notch - Rear
19	24278	Disk Blade 22" x 2.5" Conc. x 1/4" Smooth
19	24387	Disk Blade 22" x 2.5" Conc. x 1/4" Smooth - Notched
19	24054	Disk Blade 20" x 2.0" Conc. x 1/4" Smooth
19	24107	Disk Blade 20" x 2.0" Conc. x 1/4" Notch
19	24160	Disk Blade 18" x 1.75" Conc. x 6 Ga. Smooth
19	24219	Disk Blade 18" x 1.75" Conc. x 6 Ga. Notch
20	24478	U-Bolt 7/8" x 8" Spread
21	24329	U-Bolt for Scraper Bar
22	88291	Bolt 3/4" x 3" long (Grade 5)
23	88621	Lock Nut 1/2" (Nylon)
24	88611	Lock Nut 3/4" (Nylon)
25	88371	Nut (non-lock) 7/8"
26	88341	Lock Washer 7/8"
OPTIONAL FLEX COMPONENTS		
27	25706	Spring Shank for Rolling Plow
28	25757	Scraper Bar Bracket Weldment
29	25715	Top Clamp Plate
30	25756	Bottom Bearing Shank Saddle
31	25689	U-Bolt 7/8" x 8" spread w/7-1/2" long leg
32	24359	Pivot Bushing (1" O.D. x 3/4" long)
33	88131	Flat Washer 3/4"
34	25692	Bolt 3/4" x 4-1/2" long (Grade 5)
35	88130	Lock Washer 3/4"

RPS
RPS 20

GANG COMPONENTS



GANG COMPONENTS**RPS
RPS 20**

<u>REF. NO.</u>	<u>PART NO.</u>	<u>DESCRIPTION</u>
1	24117	Scraper Bar, 9'9-1/2" long
1	24109	Scraper Bar, 10'4" long
1	24063	Scraper Bar, 11'10" long
1	24057	Scraper Bar, 12'10" long
1	24515	Scraper Bar, 13'8" long
1	24059	Scraper Bar, 14'8" long
1	24061	Scraper Bar, 15'4" long
1	24060	Scraper Bar, 16'5" long
2	24044	Scraper Bar Bracket (use on rigid bearing stand only)
3	24301	Scraper Blade
4	24302	Scraper Blade (at bearing stand)
5	24247	Scraper Arm
5	25717	Special scraper arm for Flex with 9" spacing at the bearing stand only
5	25716	Special scraper arm for Flex with 10-1/2" spacing at the bearing stand only
6	24300	Scraper Clip
7	24156	Bearing Stand Wear Plate (specify hole size for bolts when ordering)
8	24282	8" U-bolt, 3/4"
9	24329	1/2" U-bolt; for scraper arm clip
10	24217	1/2" U-bolt; for scraper bar
11	88445	Bolt, 1/2" - 13 x 1 1/2" carriage
12	25691	Bolt, socket flat head, 1/2" - 13 x 2 1/2"
13	88130	Washer, lock, 3/4"
14	88303	Washer lock 1/2"
16	88110	Nut, 3/4" (non lock)
17	88104	Nut, 1/2" (non lock)
18	88621	Nylock Nut, 1/2"
OPTIONAL SPRING LOADED SCRAPER		
19	25698	"Walker" spring loaded scraper
20	88608	Bolt 3/8" x 3" HHCS
21	25867	Special scraper bar (2" x 2" sq. tubing) 9' 9-1/2" long
21	25868	Special scraper bar (2" x 2" sq. tubing) 10' 4" long
21	25743	Special scraper bar (2" x 2" sq. tubing) 11' 10" long
21	25745	Special scraper bar (2" x 2" sq. tubing) 12' 10" long
21	25746	Special scraper bar (2" x 2" sq. tubing) 13' 8" long
21	25747	Special scraper bar (2" x 2" sq. tubing) 14' 8" long
21	25748	Special scraper bar (2" x 2" sq. tubing) 15' 4" long
21	25749	Special scraper bar (2" x 2" sq. tubing) 16' 5" long
22	25690	U-Bolt 1/2" dia. x 2-1/8" spread w/3-1/4" long legs

*NOTE: A special scraper bar is required to mount spring loaded scrapers

10' RPS and RPS 20 Series

GANG INFORMATION

Front Gang — 9" Spacing

TOTAL BLADES - 13

SCRAPER BAR - 9' 9-1/2" long

RPS 1-3/4" ROUND GANG SHAFT - 118" long

RPS 20 1-1/2" SQUARE GANG SHAFT - 117-1/4" long

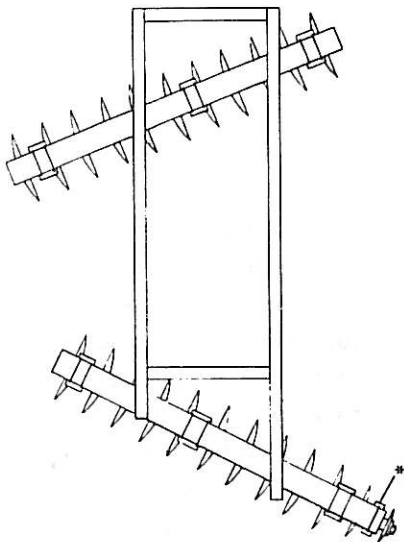
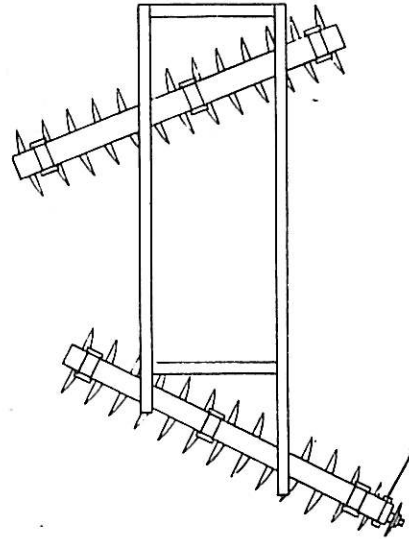
Rear Gang — 9" Spacing

TOTAL BLADES - 14

SCRAPER BAR - 10' 4"

RPS 1-3/4" ROUND GANG SHAFT - 127" long

RPS 20 1-1/2" SQUARE GANG SHAFT - 126-1/4" long



Front Gang — 10-1/2" Spacing

TOTAL BLADES - 11

SCRAPER BAR - 9' 9-1/2" long

RPS 1-3/4" ROUND GANG SHAFT - 114-1/2" long

RPS 20 1-1/2" SQUARE GANG SHAFT - 113-3/4" long

Rear Gang — 10-1/2" Spacing

TOTAL BLADES - 12

SCRAPER BAR - 10' 4" long

RPS 1-3/4" ROUND GANG SHAFT - 125" long

RPS 20 1-1/2" SQUARE GANG SHAFT - 124-1/4" long

NOTE: *Indicates location of scraper bar bracket used when unit is equipped with rigid bearing stands. These brackets are not needed on units equipped with Flex bearing stands.

GANG INFORMATION**12' RPS
and
RPS 20 Series****Front Gang — 9" Spacing**

TOTAL BLADES - 16

SCRAPER BAR - 11' 10" long

RPS TWO 1-3/4" ROUND GANG SHAFTS

LEFT: - 72" long

RIGHT: - 72" long

RPS 20 TWO 1-1/2" SQUARE GANG SHAFTS

LEFT: 71-1/2" long

RIGHT: - 71-1/2" long

Rear Gang — 9" Spacing

TOTAL BLADES - 17

SCRAPER BAR - 12' 10" long

RPS TWO 1-3/4" ROUND GANG SHAFTS

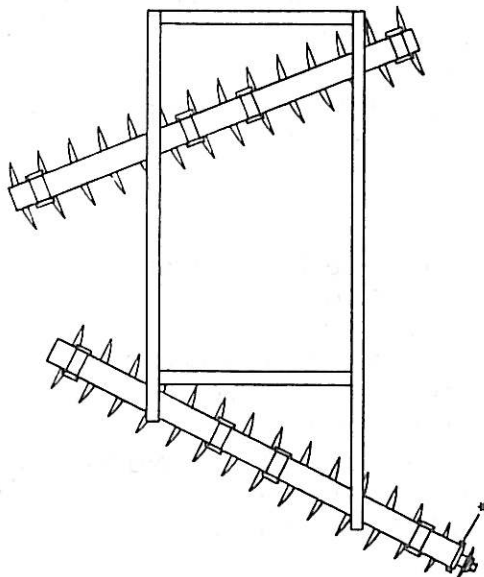
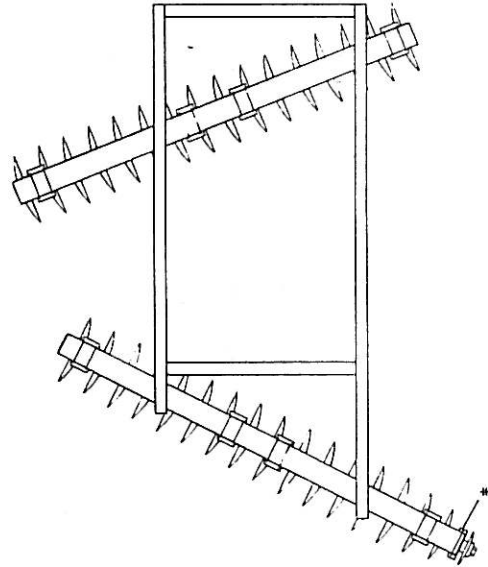
LEFT: - 72" long

RIGHT: - 81-1/4" long

RPS 20 TWO 1-1/2" SQUARE GANG SHAFTS

LEFT: - 71-1/2" long

RIGHT: - 80-3/4" long

**Front Gang — 10-1/2" Spacing**

TOTAL BLADES - 14

SCRAPER BAR - 11' 10" long

RPS TWO 1-3/4" ROUND GANG SHAFTS

LEFT: - 72" long

RIGHT: - 72" long

RPS 20 TWO 1-1/2" SQUARE GANG SHAFTS

LEFT: - 71-1/2" long

RIGHT: - 71-1/2" long

Rear Gang — 10-1/2" Spacing

TOTAL BLADES - 15

SCRAPER BAR - 12' 10" long

RPS TWO 1-3/4" ROUND GANG SHAFTS

LEFT: - 72" long

RIGHT: - 82-1/2" long

RPS 20 TWO 1-1/2" SQUARE GANG SHAFTS

LEFT: - 71-1/2" long

RIGHT: - 82-1/4" long

NOTE: *Indicates location of scraper bar bracket used when unit is equipped with rigid bearing stands. These brackets are not needed on units equipped with Flex bearing stands.

14' RPS and RPS 20 Series

GANG INFORMATION

Front Gang — 9" Spacing

TOTAL BLADES - 18

SCRAPER BAR - 13' 8" long

RPS TWO 1-3/4" ROUND GANG SHAFTS

LEFT: - 81-1/4" long

RIGHT: - 81-1/4" long

RPS 20 TWO 1-1/2" SQUARE GANG SHAFTS

LEFT: - 80-3/4" long

RIGHT: - 80-3/4" long

Rear Gang — 9" Spacing

TOTAL BLADES - 19

SCRAPER BAR - 14' 8" long

RPS TWO 1-3/4" ROUND GANG SHAFTS

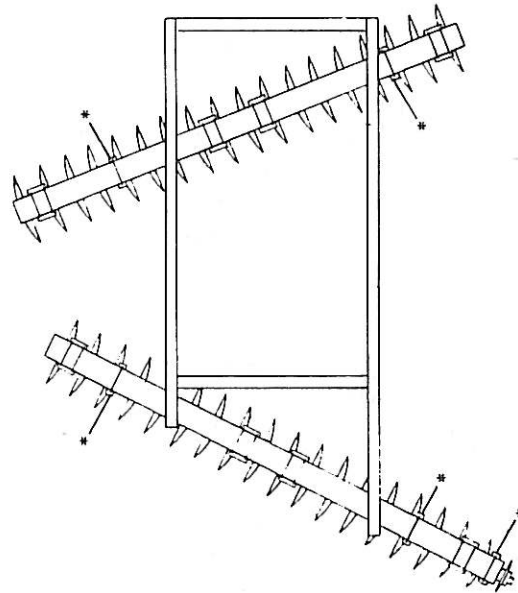
LEFT: - 81-1/4" long

RIGHT: - 90-1/2" long

RPS 20 TWO 1-1/2" SQUARE GANG SHAFTS

LEFT: - 80-3/4" long

RIGHT: - 89-3/4" long



Front Gang — 10-1/2" Spacing

TOTAL BLADES - 16

SCRAPER BAR - 13' 8" long

RPS TWO 1-3/4" ROUND GANG SHAFTS

LEFT: - 82-1/2" long

RIGHT: - 82-1/2" long

RPS 20 TWO 1-1/2" SQUARE GANG SHAFTS

LEFT: - 82-1/4" long

RIGHT: - 82-1/4" long

Rear Gang — 10-1/2" Spacing

TOTAL BLADES - 17

SCRAPER BAR - 14' 8" long

RPS TWO 1-3/4" ROUND GANG SHAFTS

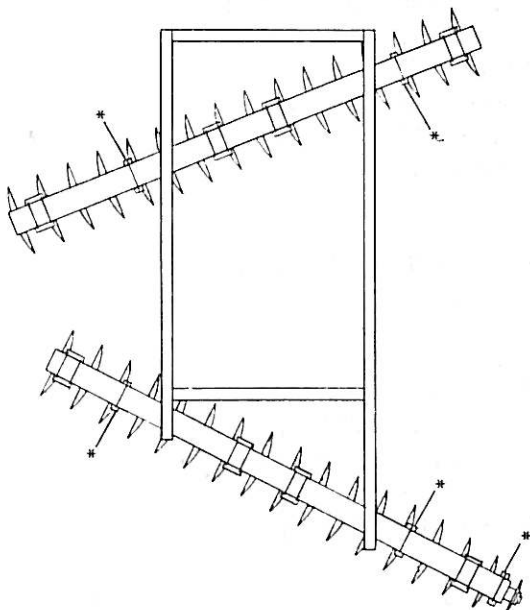
LEFT: - 82-1/2" long

RIGHT: - 93" long

RPS 20 TWO 1-1/2" SQUARE GANG SHAFTS

LEFT: - 82-1/4" long

RIGHT: - 92-3/4" long



NOTE: *Indicates location of scraper bar bracket used when unit is equipped with rigid bearing stands. These brackets are not needed on units equipped with Flex bearing stands.

GANG INFORMATION**16' RPS and
RPS 20 Series****Front Gang — 9" Spacing**

TOTAL BLADES - 20

SCRAPER BAR - 15' 4" long

RPS TWO 1-3/4" ROUND GANG SHAFTS

LEFT: - 90-1/2" long

RIGHT: - 90-1/2" long

RPS 20 TWO 1-1/2" SQUARE GANG SHAFTS

LEFT: - 89-3/4" long

RIGHT: - 89-3/4" long

Rear Gang — 9" Spacing

TOTAL BLADES - 21

SCRAPER BAR - 16' 5" long

RPS TWO 1-3/4" ROUND GANG SHAFTS

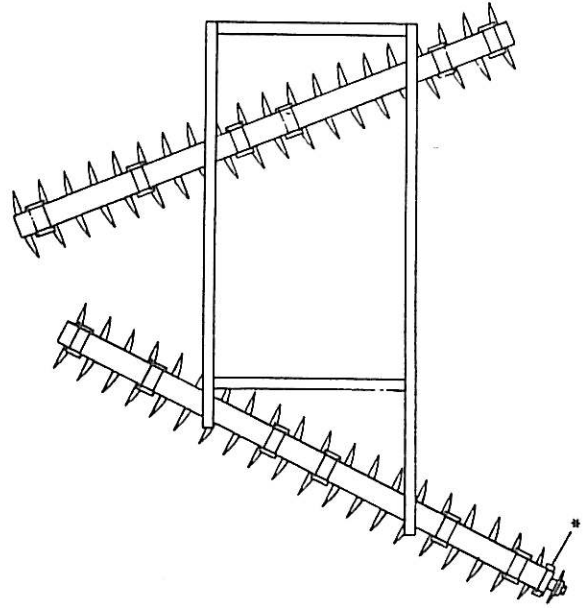
LEFT: - 90-1/2" long

RIGHT: - 99-3/4" long

RPS 20 TWO 1-1/2" SQUARE GANG SHAFTS

LEFT: - 89-3/4" long

RIGHT: - 99" long

**Front Gang — 10-1/2" Spacing**

TOTAL BLADES - 18

SCRAPER BAR - 15' 4" long

RPS TWO 1-3/4" ROUND GANG SHAFTS

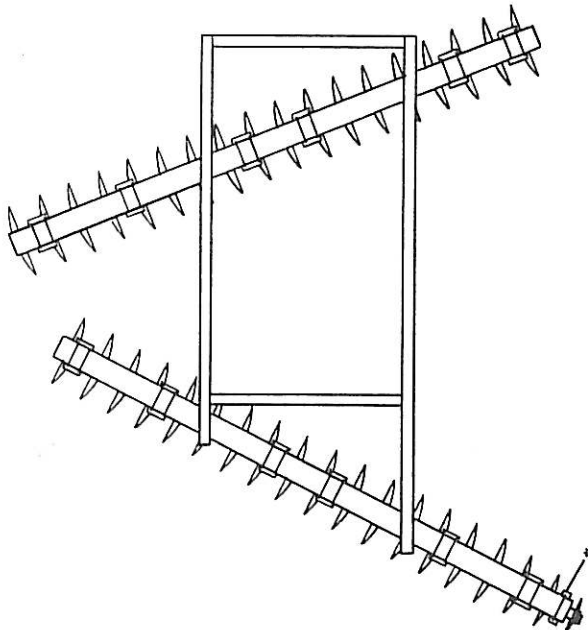
LEFT: - 93" long

RIGHT: - 93" long

RPS 20 TWO 1-1/2" SQUARE GANG SHAFTS

LEFT: - 92-3/4" long

RIGHT: - 92-3/4" long

**Rear Gang — 10-1/2" Spacing**

TOTAL BLADES - 19

SCRAPER BAR - 16' 5" long

RPS TWO 1-3/4" ROUND GANG SHAFTS

LEFT: - 93" long

RIGHT: - 103-1/2" long

RPS 20 TWO 1-1/2" SQUARE GANG SHAFTS

LEFT: - 92-3/4" long

RIGHT: - 103-3/4" long

NOTE: *Indicates location of scraper bar bracket used when unit is equipped with rigid bearing stands. These brackets are not needed on units equipped with Flex bearing stands.

